

Manual Directional Valves

DMG-G02-*A/B/C-W/O-10

- Maximum flow: 60 l/min{ 16 GPM}
- Maximum operating pressure: 250 bar{3625 PSI}
- Nominal valve size: NG 6,CETOP 3 and ISO 4401-AC-03-4-A



Characteristics

- Highest performance in NG 6.
- High pressure and flow design.
- Optimized spool design to reduce flow force.
- Proven quality through 10 million endurance test.
- Connections to DIN, ISO and CETOP.

Specification

Maximum flow	60 l/min{16 GPM}
Maximum operating pressure(P,A and B ports)	250 bar{3625 PSI}
Maximum permissible back pressure(T port)	140 bar{2030 PSI}
Ambient temperature range	-15°C~+50°C
Hydraulic fluid temperature	-15°C~+70°C
Viscosity range	15~400mm ² /s
Hydraulic oil	ISO VG 32,46,68
Fluid cleanliness	NAS Class 9 MAX. ISO
Mounting pattern	4401-AC-05-4-A
Weight	1.9 kg
Valve fixing screws	M5x45Lx4 pcs. (NO.10-20UNCx1-3/4"Lx4 pcs.)
Tightening torque	5~7 Nm

Ordering Code

DMG-G02- *A/B/C-W/O-10

1 2 3 4 5 6 7

7 Design Number

6 Mode Of Orientation

W: Spring Orientated
O: Detent Orientated

5 Spring Arrangement

A: Spring offset to port "A"
B: Spring offset
C: Spring centered

4 Type of Spool(Center Condition)

0: Open center(all ports)
1: Open center(P,A to T)
2: Closed center(all ports)
3: Closed center(P,B)
6: Closed center(P only)
7: Open center(P to A,B)
8: Tandem center(P to T)
33: Closed center(bleed A,B)

0	1	2	3
6	7	8	33

3 Nominal valve size

Nominal valve size: NG 6,CETOP 3 and ISO 4401-03

2 Manifold or Subplate Mounting

1 Directional Control Valve

Spool Types

Position type at neutral	-C-	-B-	Position type at neutral	-C-	-B-	Position type during transition	-A-
0			6			0	
1			7			2	
2			8			6	
3			33				

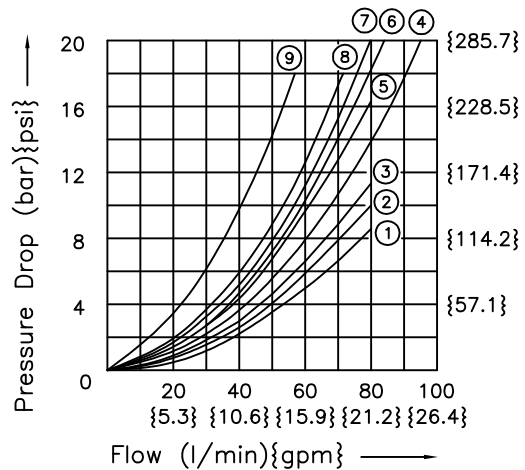
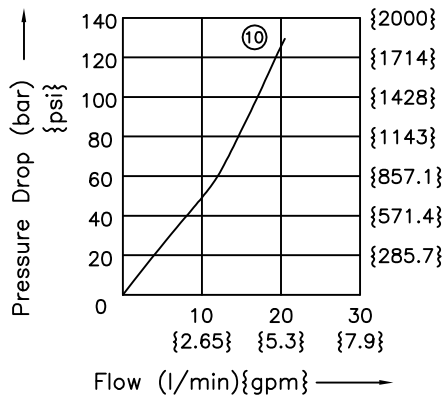
Performance Curves

Pressure Drop Curve Reference Chart

Viscosity of Hydraulic Fluid: 20 mm²/s

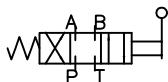
Spool Type	C, B, BL									
	Control Position				Neutral Position					
	P→A	B→T	P→B	A→T	P→T	A→T	B→T	P→A	P→B	
0	4	3	4	3	4	1	1	4	4	
1	4	3	4	3	8	2	-	4	-	
2	6	4	6	4	-	-	-	-	-	
3	6	4	8	2	-	4	-	-	-	
6	8	2	8	2	-	4	4	-	-	
7	4	6	4	6	-	-	-	7	7	
8	7	5	7	5	8	-	-	-	-	
33	6	4	6	4	-	10	10	-	-	

Spool Type	A, AL			
	Control Position			
	P→A	B→T	P→B	A→T
0	5	4	5	4
2	7	6	7	8
6	7	4	8	4
22	6	-	7	-

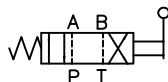


Graphics

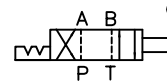
(Spring Centered)
(DMG-G02-*C-W-10)



Spring Offset
(DMG-G02-*A/B-W-10)



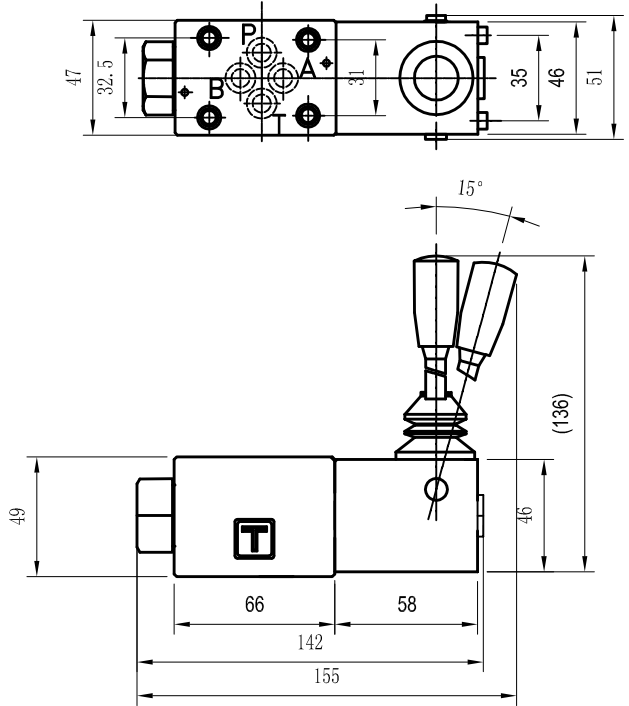
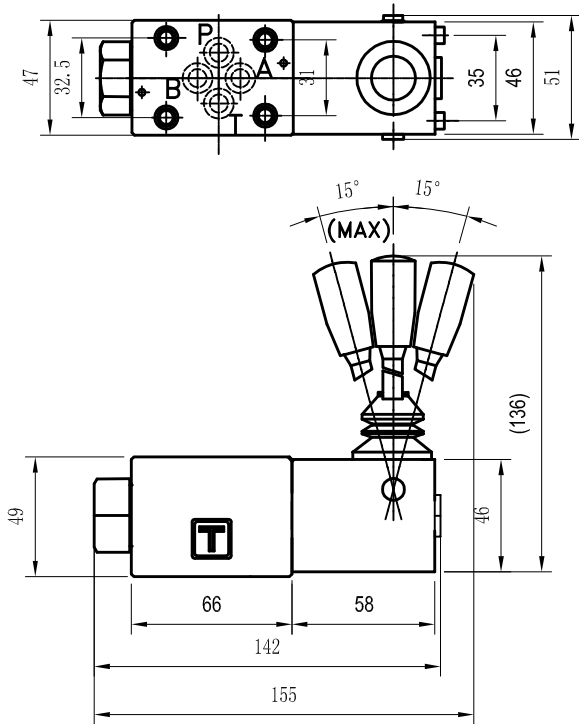
(Detend)
(DMG-G02-*C-O-10)



Dimensions

DMG-G02-*C-*-10

DMG-G02-*A-*-10



DMG-G02-**-W-10

DMG-G02-**-O-10

