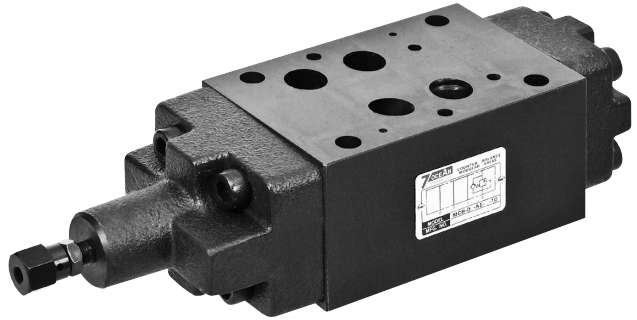


COUNTER BALANCE VALVE

SANDWICH PLATE DESIGN MCB04 SIZE 16

FEATURES :

- Highest performance in NG 16
- Direct operated pressure counter balance valve
- Used for actuator back pressure control
- Sandwich plate design
- Connections to DIN, ISO and CETOP



Model: MCB-04-A1-2-10

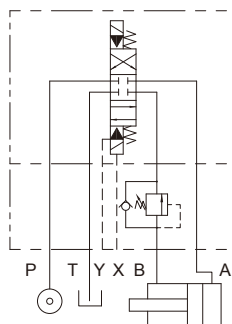
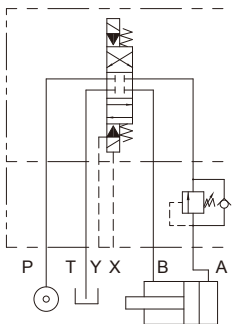
SPECIFICATION :

Maximum Flow Rate		300 l/Min (79.3 GMP)
Maximum Working Pressure		320 Bar (4570 PSI)
Pressure Adjusting Range		1: 5~35 Bar
		2: 20~140 Bar
Ambient Temperature Range		-20°C~+50°C
Hydraulic Fluid Temperature Range		-20°C~+70°C
Viscosity Range		15~400 mm ² /S
Hydraulic Oil		ISO VG32, 46, 68
Fluid Cleanliness		25 μm
Mounting Pattern		ISO 4401-AD-07-4-A
Weight	A Type	8.6 kg
	B Type	8.6 kg

HYDRAULIC CONFIGURATION:

■ MCB-04-A1-*-20

■ MCB-04-B1-*-20



COUNTER BALANCE VALVE SANDWICH PLATE DESIGN MCB04 SIZE 16

ORDERING CODE :

M CB - 04 - B 1 - 1 - 20 - **
 1 2 3 4 5 6 7 8

1 SANDWICH PLATE DESIGN

2 COUNTER BALANCE VALVE

3 NOMINAL VALVE SIZE:

NG 16, CETOP7 and ISO 4401-07 (NFPA-D07/DIN 24340)

4 CONTROL PORT

A: A port
 B: B port

5 CONTROL TYPE

1: internal pilot, internal drain

6 PRESSURE ADJUSTING RANGE

1: 5~35 Bar
 2: 20~140 Bar

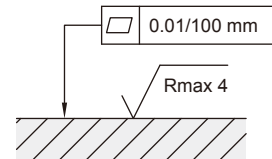
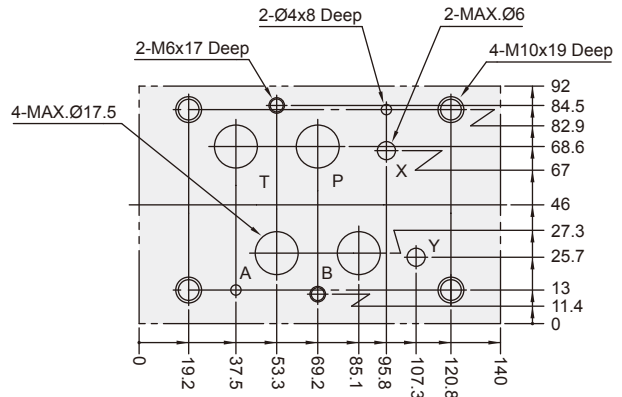
7 DESIGN NUMBER

10: with handle
 20: without handle

8 OPTIONAL INQUIRY

INSTALLATION DIMENSIONS:

(Machined valve mounting face with position of ports)
 Mounting Surface: ISO 4401-AD-07-4-A



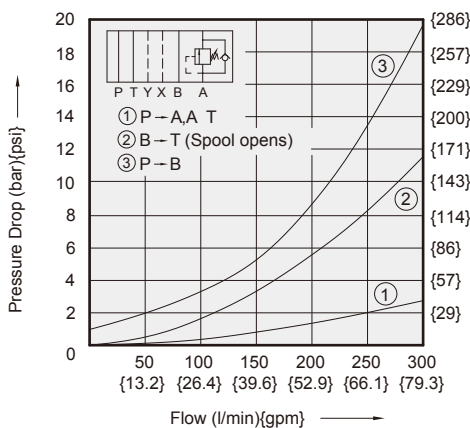
Required surface finish of mating piece when fitting the valve without subplate

PERFORMANCE CURVES:

Viscosity of Hydraulic Fluid: 32 mm²/s

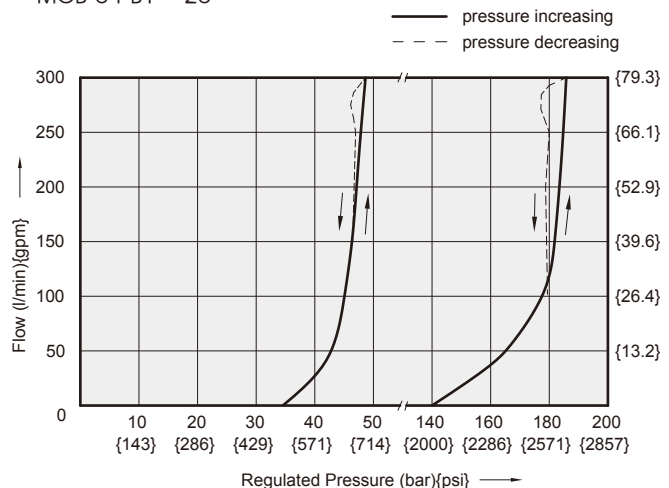
Pressure Drop Characteristic

■ MCB-04-A1-1-20



Regulated Pressure V.S. Flow Diagram

■ MCB-04-A1-1-20
 ■ MCB-04-B1-1-20

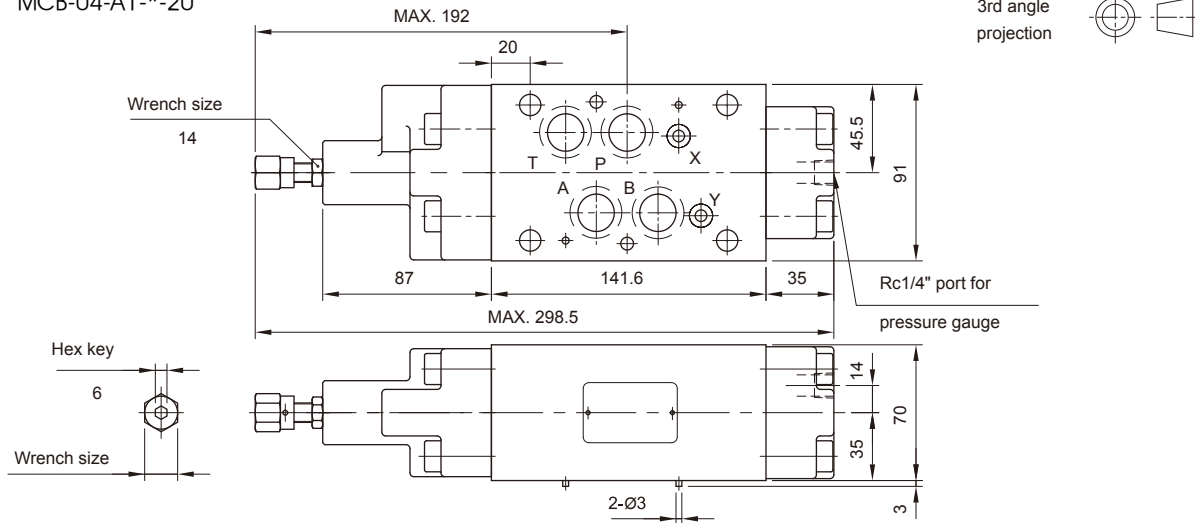


COUNTER BALANCE VALVE

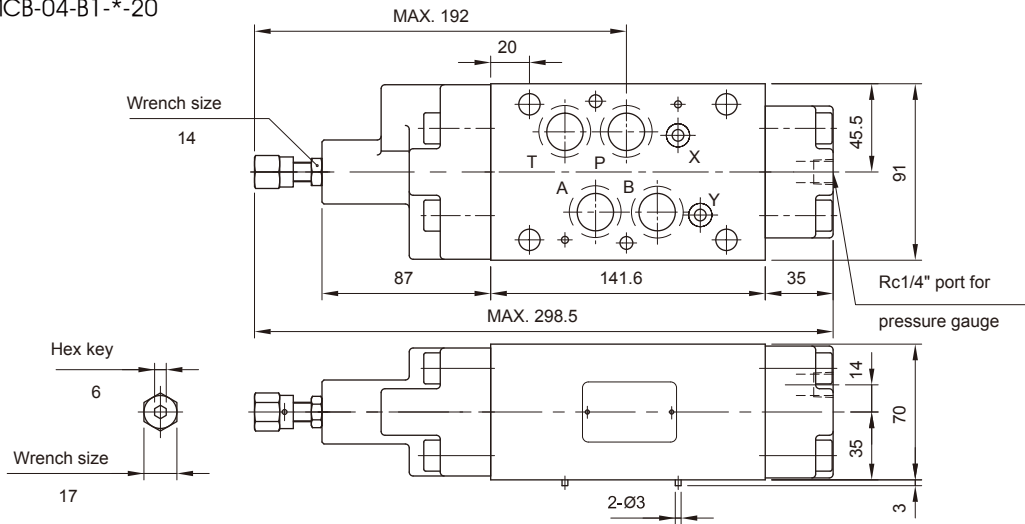
SANDWICH PLATE DESIGN MCB04 SIZE 16

DIMENSIONS :

■ MCB-04-A1-*-20



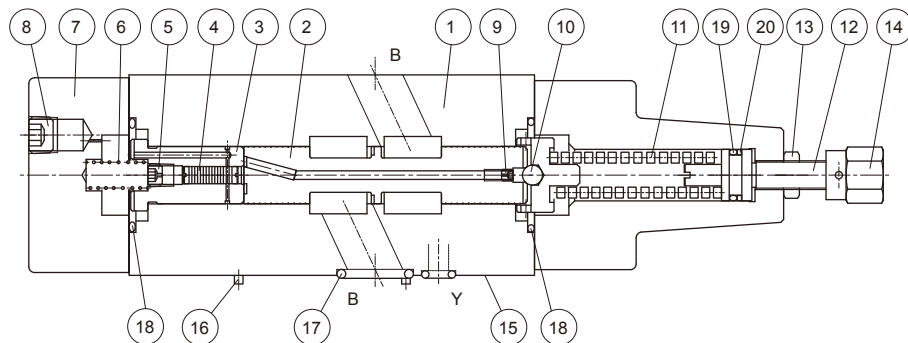
■ MCB-04-B1-*-20



CROSS SECTION DRAWING :

■ MCB-04-B1-*-10

1. Body
2. Spool
3. Sleeve
4. Piston
5. Choke
6. Sleeve Spring
7. Cover
8. Plug
9. Choke
10. Ball
11. Adjustment spring
12. Setting screw
13. Locking nut
14. Adjustment element



- | | | |
|---|--|---------------------|
| 15. Connections to DIN 24340 from A16;
6 through holes for fixing screws | 17. O-ring:
Ports A,B,P,T: AS568-118(NBR,Hs90);
Ports X,Y: AS568-013(NBR,Hs90) | 18. O-ring 1B-AS127 |
| 16.2 Locating Pins | | 19. O-ring 1A-P14 |
| | | 20. O-ring BU-P14 |