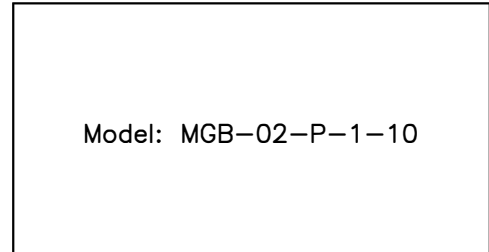


## Characteristics

- Highest performance in NG 6.
- Sandwich plate design.
- 4 pressure adjusting ranges.
- Pressure reduction in port P.
- Connections to DIN, ISO and CETOP.



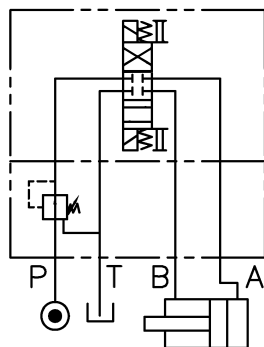
## Specification

Maximum flow	40 l/min{10.6 GPM}
Maximum operating pressure	250 bar{3571 PSI}
Pressure adjusting range	0 : 1.5 ~ 35 bar
	1 : 7 ~ 70 bar
	2 : 7 ~ 140 bar
	3 : 7 ~ 210 bar
Ambient temperature range	-20°C~+50°C
Hydraulic fluid temperature	-20°C~+70°C

Viscosity range	15~400mm <sup>2</sup> /s	
Hydraulic oil	ISO VG 32,46,68	
Fluid cleanliness	NAS Class 9 MAX.	
Mounting pattern	ISO 4401-AB-03-4-A	
Weight	P type	1.9kg

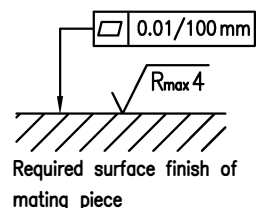
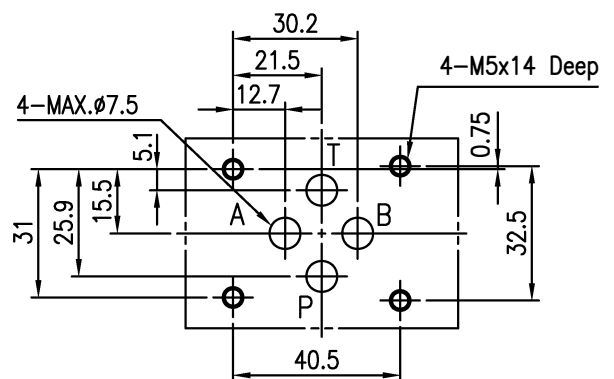
## Hydraulic Configuration

MGB-02-P-\* -10



## Installation Dimensions

(Machined valve mounting face with position of ports)



Ordering Code

**M GB - 02 - P - 1 - 10 - \*\***

1 2 3 4 5 6 7

7 Optional Inquiry

H: with auxiliary port for pressure gauge  
Y: external drain

6 Design Number

10: with handle  
20: without handle

5 Pressure Adjusting Range

0: 1.5 ~ 35 bar  
1: 7 ~ 70 bar  
2: 7 ~ 140 bar  
3: 7 ~ 210 bar

4 Configuration

P: reduced pressure on P port

3 Nominal valve size

Nominal valve size: NG 6, CETOP 3 and ISO 4401-03

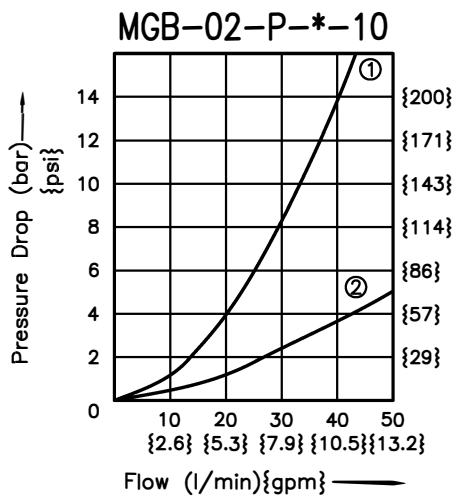
2 Balanced Piston Type Pressure Reducing Valve

1 Sandwich Plate Design

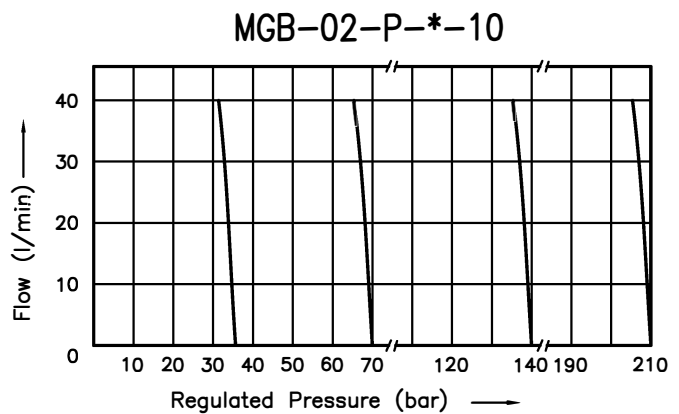
Performance Curves

Viscosity of Hydraulic Fluid: 32 mm<sup>2</sup>/s

Pressure Drop Characteristic



Regulated Pressure Versus Flow Diagram

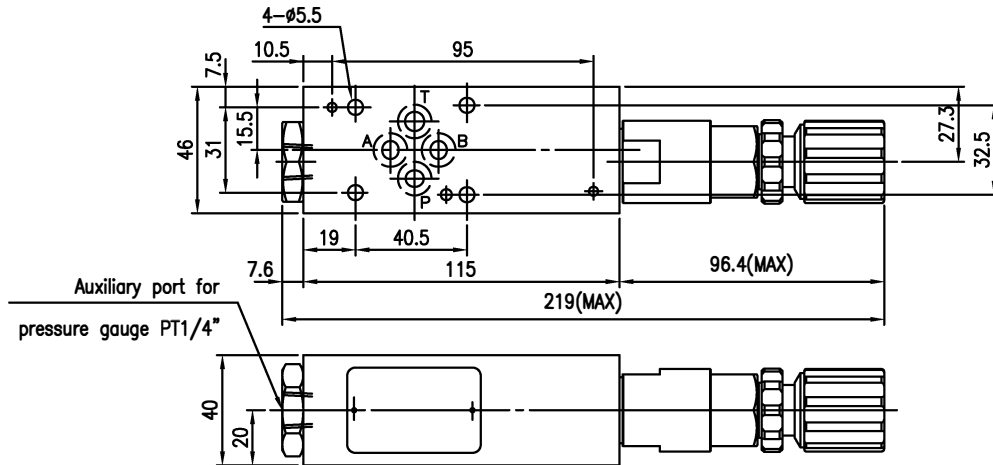


1. differential pressure variation versus variation of flow between inlet port and use port
2. differential pressure variation versus variation of flow between use port and discharge port

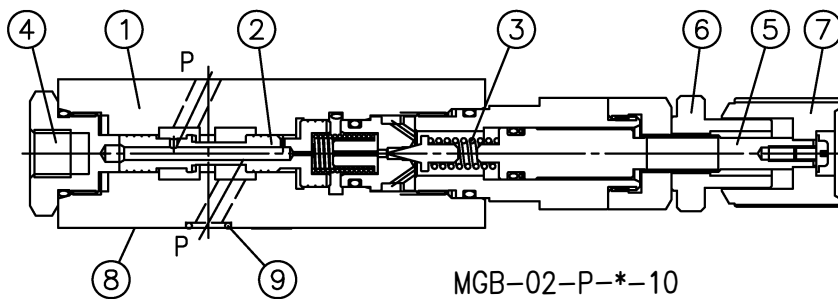
Dimensions

3rd angle projection 

MGB-02-P-\*-10-H



Cross Section Drawing



MGB-02-P-\*-10

- |                      |                                      |
|----------------------|--------------------------------------|
| 1. Body              | 7. Adjustment element                |
| 2. Spool             | 8. Connections to DIN 24340 from A6; |
| 3. Adjustment spring | valve fixing screws M5 DIN 912-10.9, |
| 4. Plug              | tightening torque 8~9 Nm             |
| 5. Setting screw     | 9. O-ring 1B-P9                      |
| 6. Locking nut       | for ports A,B,P and T                |