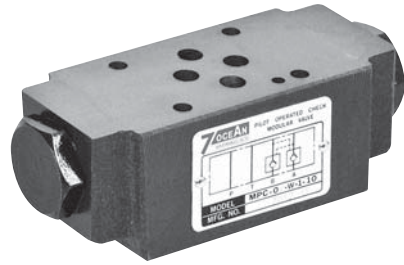


PILOT OPERATED CHECK VALVE

SANDWICH PLATE DESIGN MPCO2 SIZE 6

FEATURES :

- Highest performance in NG 6
- Sandwich plate design
- Pilot operated check valve
- For leak free sealing of one or two actuator port
- Connections to DIN, ISO and CETOP



Model: MPC-02-W-1-10

SPECIFICATION :

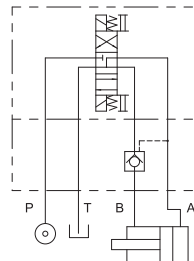
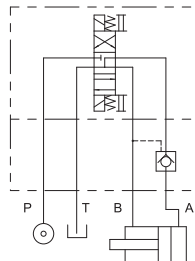
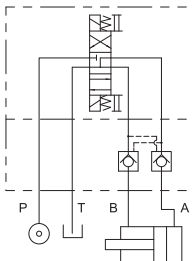
Maximum Flow Rate		50 l/Min (13.2 GPM)
Maximum working pressure		320 Bar (4570 PSI)
Spring cracking pressure		1: 2 Bar (29 PSI) 2: 5 Bar (71 PSI)
Area ratio	Pilot piston	1
	Check valve seat	0.37
	Needle valve seat	-
Ambient Temperature Range		-20 °C ~ +50 °C
Hydraulic Fluid Temperature Range		-20 °C ~ +70 °C
Viscosity Range		15 ~ 400 mm ² /S
Hydraulic Oil		ISO VG32, 46, 68
Fluid Cleanliness		25 μm
Mounting Pattern		ISO 4401-AB-03-4-A
Weight	W Type	1.2 kg
	A Type	1.2 kg
	B Type	1.2 kg

HYDRAULIC CONFIGURATION:

■ MPC-02-W-*-10

■ MPC-02-A-*-10

■ MPC-02-B-*-10



PILOT OPERATED CHECK VALVE

SANDWICH PLATE DESIGN MPC02 SIZE 6

ORDERING CODE :

M PC - 02 - W - 1 - 10 - **

1 2 3 4 5 6 7

1 SANDWICH PLATE DESIGN

2 PILOT OPERATED CHECK VALVE

3 NOMINAL VALVE SIZE:

NG 6, CETOP 3 and ISO 4401-03 (NFPA-D03/DIN 24340)

4 CONFIGURATION

W: double; acting on ports A & B

A: single; acting on port A

B: single; acting on port B

5 SPRING CRACKING PRESSURE

1: 2 Bar

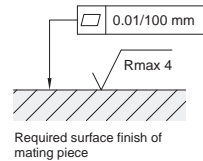
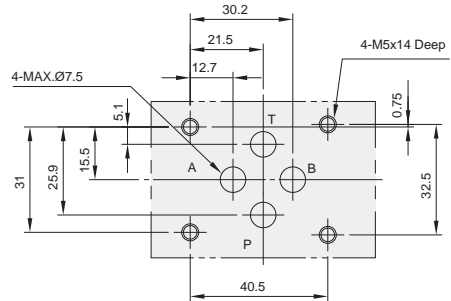
2: 5 Bar

6 DESIGN NUMBER

7 OPTIONAL INQUIRY

INSTALLATION DIMENSIONS:

(Machined valve mounting face with position of ports)

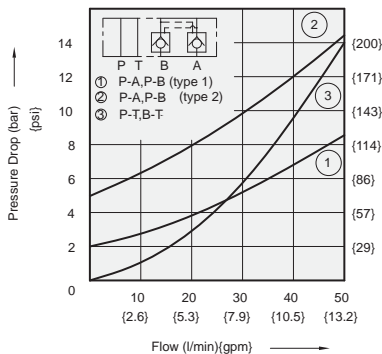


PERFORMANCE CURVES:

Viscosity of Hydraulic Fluid: 32 mm²/s

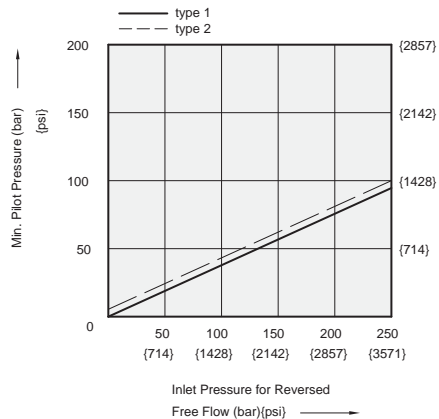
Pressure Drop Characteristic

■ MPC-02-W-*-10



Min. Pilot Pressure Characteristic

■ MPC-02-W-*-10



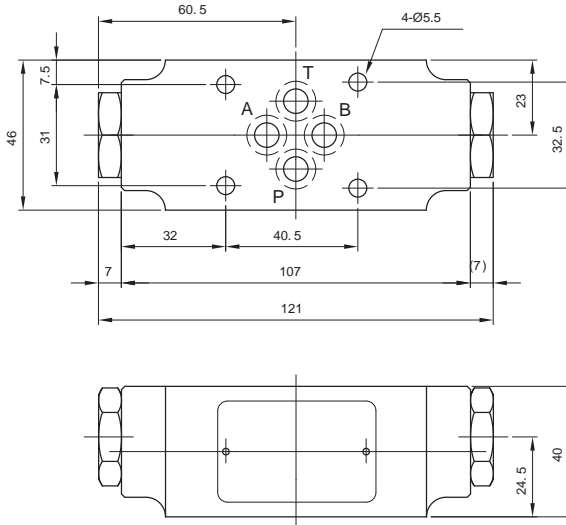
PILOT OPERATED CHECK VALVE

SANDWICH PLATE DESIGN MPC02 SIZE 6

DIMENSIONS :

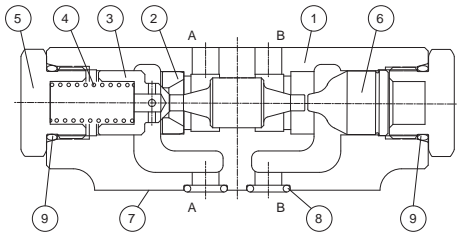
- MPC-02-W-*-10
- MPC-02-A-*-10
- MPC-02-B-*-10

3rd angle
projection



CROSS SECTION DRAWING :

■ MPC-02-A-*-10



- 1. Body
- 2. Seat
- 3. Poppet
- 4. Spring
- 5. Nut
- 6. Bushing
- 7. Connections to DIN 24340 from A6; valve fixing screws M5x85 DIN 912-10.9 tightening torque 8-9 Nm
- 8. O-ring 1B-P9 for ports A,B,P and T
- 9. O-ring 1B-P18